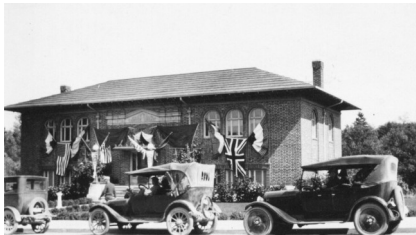


CLALLAM COUNTY HISTORICAL SOCIETY

MEMBERSHIP



CCHS PHOTO 1919 CARNEGIE OPENING

Museum at the Carnegie

207 S. Lincoln, Port Angeles, WA

Location of "Forever Learning"

Activities. Open for touring

Wednesday through Saturday

1pm-4pm 360-452-6779

**Tours at any other times
may be arranged by
calling 360-452-2662**

The Clallam County Historical Society is a nonprofit organization that relies on a variety of funding sources for its activities. Private support is vital to sustaining the Society's collections, programs, and exhibits for today and tomorrow. Your support helps CCHS serve the county with educational, engaging and entertaining programs.

Benefits of membership:

- Reduced fees on special workshops.
- Members Only presale at the Annual Garage Sale.
- Reduced fee at the "Forever Learning" classes which consist of 6 weekly 2 hour activity sessions geared to local topics.
- A quarterly newsletter to keep up on the Society's activities.
- Opportunity to volunteer at the Museum at the

Carnegie and the Lincoln School Project. This project will restore the former Lincoln Grade School to house the Clallam County Museum, Clallam County Historical Society and Clallam County Genealogy Society. Completion of this project will provide the community with a complete Historical Resource Center that includes a research library, newspaper and photo archives and more.

See volunteer page for form to print for volunteering.

WELCOME TO CCHS!

Make checks payable to:

CCHS

Check

Clallam
County
Historical
Society

Name _____

Address _____

Phone _____

email _____

For announcements only—will not be distributed

Membership Levels

Senior Citizen

Individual

Family

Explorer

Pioneer

Homesteader

Visionary

Name on donor plaque — Complimentary
copy of *Clallam County, Washington — A
History*

Price

\$25.00

\$30.00

\$35.00

\$100.00

\$250.00

\$500.00

\$1000.00

Clallam County Historical Society

P. O. Box 1327

Port Angeles, Washington 98362

Phone 360-452-2662

artifact@olypen.com

Kathy Monds

Executive Director